



SASURIE COLLEGE OF ENGINEERING

Approved by AICTE, New Delhi. Affiliated to Anna University, Chennai

Near NH544, Coimbatore Bypass, Near Vijayamangalam Tollgate, Tirupur 638056

NAAC DOCUMENTS

QUALITY INDICATOR FRAME WORK

CRITERION - 7

INSTITUTIONAL VALUES & BEST PRACTICES

SUBMITTED BY

IQAC

INTERNAL QUALITY ASSURANCE CELL

SASURIE COLLEGE OF ENGINEERING

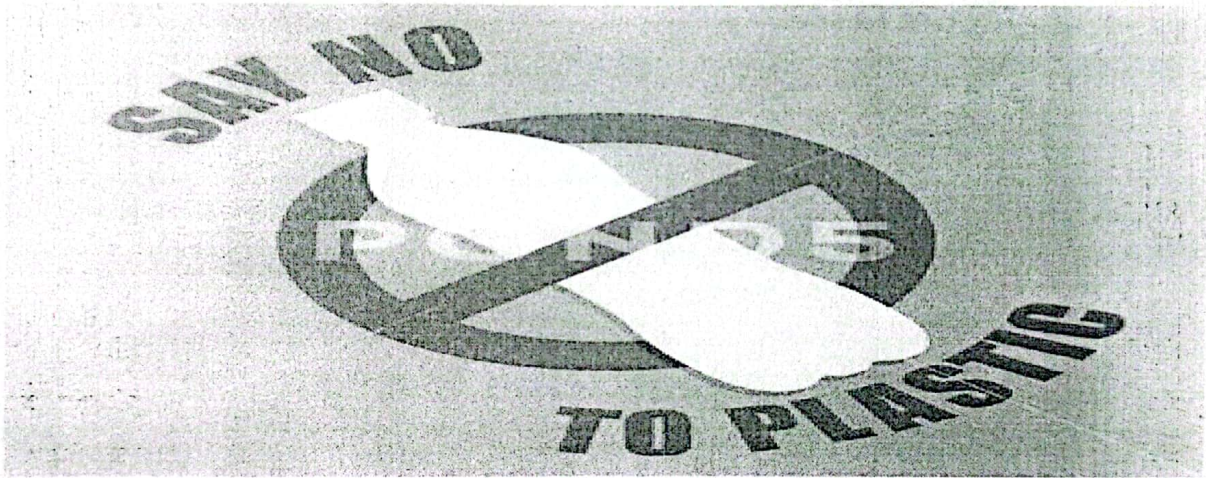


ACADEMIC YEAR (2017-2018) / EVEN SEMESTER

Date: 08.01.2018

Circular

All faculty, staff and students are requested to strictly adhere to avoid the usage of single use plastic products in the college premises with immediate effect to make the campus environment friendly. It is also requested to co-operate and use environment friendly alternatives of plastics.




PRINCIPAL

Cc:

- All HoD's & Faculty Members
- All I, II, III & IV Year classes
- Notice board
- Office File


Dr.M.VIJAYAKUMAR ME., Ph.D.,
PRINCIPAL
 **SASURIE COLLEGE OF ENGINEERING,**
Vijayamangalam - 638 056, Tirupur (Dt).

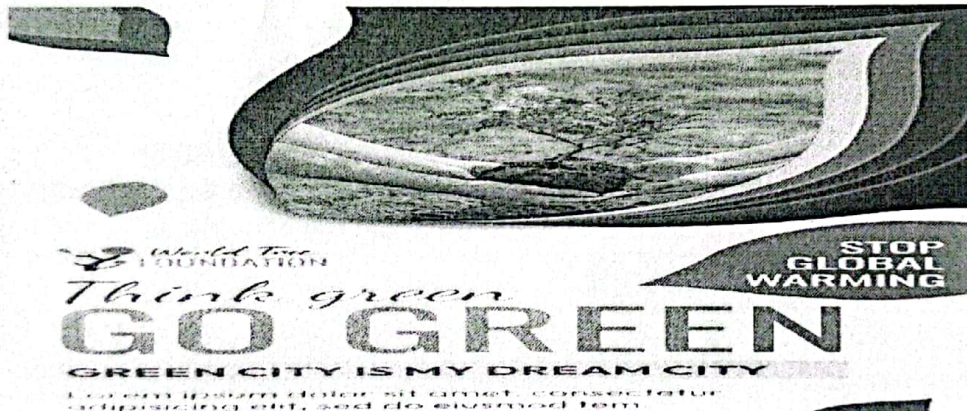
ACADEMIC YEAR (2017-2018) / EVEN SEMESTER

Date: 08.01.2018

Circular

This is to inform that our Institution is committed towards Green Practices for a sustainable campus. To achieve the vision, all faculty, staff and Students are expected to contribute by implementing the following initiatives.

- ▶ Adopt energy-saving practices in classrooms, offices, and residential areas. Turn off lights and electronics when not in use.
- ▶ Segregate waste into designated bins for recyclables, compostable and general waste.
- ▶ Participate in green campus initiatives by planting native trees.



ooh
PRINCIPAL

Cc:

- All HoD's & Faculty Members
- All I, II, III & IV Year classes
- Notice board
- Office File

me
Dr.M.VIJAYAKUMAR ME., Ph.D.,
PRINCIPAL
SASURIE COLLEGE OF ENGINEERING,
Vijayamangalam - 638 056, Tirupur (Dt).

ACADEMIC YEAR (2017-2018) / EVEN SEMESTER

Date: 08.01.2018

Circular

This is to inform that our Institution is committed to adopting water conservation practices that minimize our environmental impact and contribute to a more sustainable future. To achieve the vision, all the faculty, staff and Students are expected to contribute by implementing the following initiatives.


- Turn off the tap when not in use to prevent water wastage.
- Reports water leaks immediately to the maintenance department for swift repair, preventing unnecessary water loss.
- Engage in discussions, organize workshops, and participate in events that promote environmental awareness and encourage sustainable practices.




PRINCIPAL

Cc:

- All HoD's & Faculty Members
- All I, II, III & IV Year classes
- Notice board
- Office File

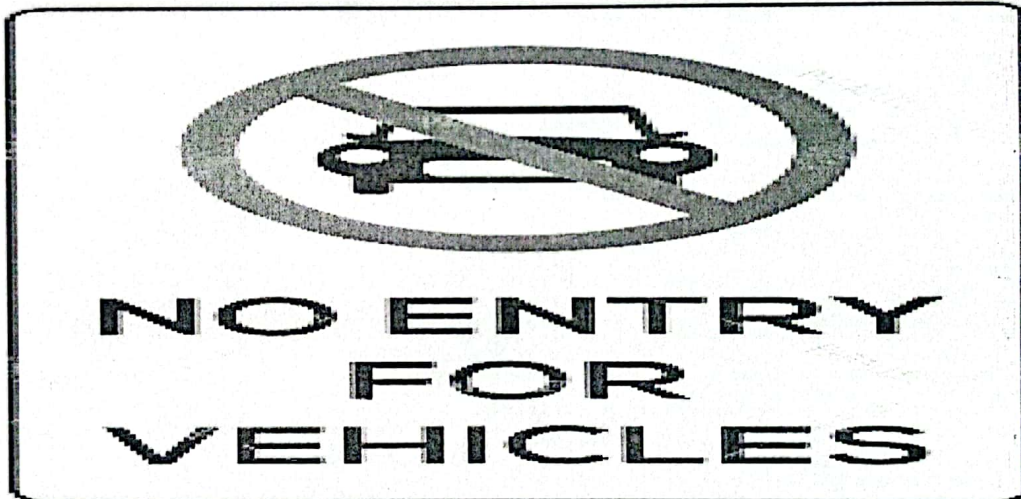

Dr.M.VIJAYAKUMAR ME., Ph.D.,
PRINCIPAL
SASURIE COLLEGE OF ENGINEERING,
Vijayamangalam - 638 056, Tirupur (Dt).

ACADEMIC YEAR (2017-2018) / EVEN SEMESTER

Date: 08.01.2018

Circular

All the faculty, staff and students are hereby informed that the entry of automobiles inside the campus is strictly prohibited. Disciplinary action will be taken against faculty, staff and students or outsiders parking their vehicle inside the premises. Entry of vehicles into the campus is also banned through this order. Further, all are requested to co-operate and not use automobiles beyond the designated parking area.



ooh
PRINCIPAL

Cc:

- All HoD's & Faculty Members
- All I, II, III & IV Year classes
- Notice board
- Office File

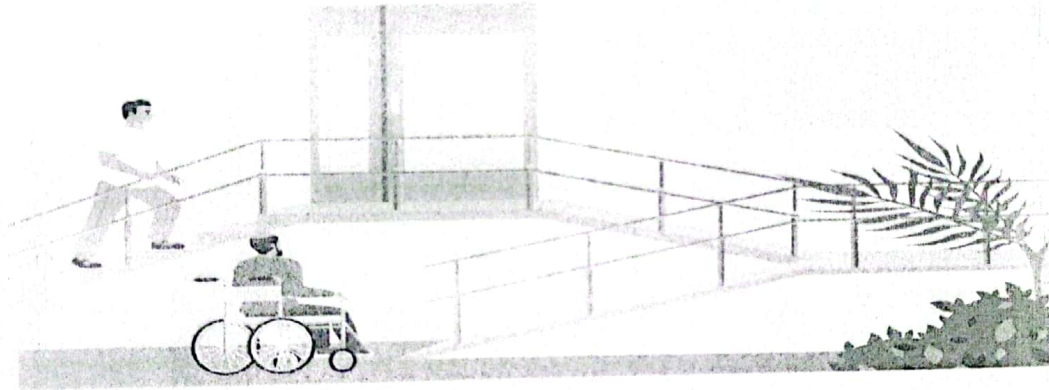
Me
Dr. M. VIJAYAKUMAR ME., Ph.D.
PRINCIPAL
SASURIE COLLEGE OF ENGINEERING,
Vijayamangalam - 638 056, Tirupur (Dt).

ACADEMIC YEAR (2017-2018) / EVEN SEMESTER

Date: 08.01.2018

Circular


Our institution is committed to provide an accessible and inclusive environment for all faculty, staff and students, regardless of their physical or cognitive abilities. In line with this commitment, ramps and modified restrooms to accommodate individuals with disabilities are available in our campus and instructed to make use of it.




PRINCIPAL

Cc:

- All HoD's & Faculty Members
- All I, II, III & IV Year classes
- Notice board
- Office File


Dr.M.VISVAKUMAR ME., Ph.D.,
PRINCIPAL
SASURIE COLLEGE OF ENGINEERING,
Vijayamangalam - 638 056, Tirupur (Dt).