

ॐ



# SASURIE COLLEGE OF ENGINEERING

Approved by AICTE, New Delhi. Affiliated to Anna University, Chennai

Near NH544, Coimbatore Bypass, Near Vijayamangalam Tollgate, Tirupur 638056

## NAAC DOCUMENTS

### QUALITY INDICATOR FRAME WORK

**CRITERION - 7**

### INSTITUTIONAL VALUES & BEST PRACTICES

SUBMITTED BY

# IQAC

INTERNAL QUALITY ASSURANCE CELL

## SASURIE COLLEGE OF ENGINEERING





# SASURIE

## COLLEGE OF ENGINEERING

Near NH - 544 Covai Bypass, Vijayamangalam - 638056, Tiruppur District.  
APPROVED BY AICTE - NEWDELHI, AFFILIATED TO ANNA UNIVERSITY - CHENNAI  
RECOGNIZED WITH UGC 2(F) & 12(B) STATUS



E-mail : [info@sasurie.com](mailto:info@sasurie.com)  
Web : [www.sasurieengg.com](http://www.sasurieengg.com)  
Phone : 9442593815 / 828

### TO WHOMSOEVER IT MAY CONCERN

7.1.2 The institution has facilities and initiatives for

1. Alternate source of energy and energy conservation measures
2. Management of the various types of degradable and non degradable waste
3. Water conservation
4. Green Campus initiatives
5. Disabled friendly, barrier free environment.

Options:

- A. 4 or All of the above
- B. 3 of the above
- C. 2 of the above
- D. 1 of the above
- E. None of the above

Response: Option A. 4 or All of the above

PRINCIPAL

Dr.M.VIJAYAKUMAR ME., Ph.D.,  
PRINCIPAL

SASURIE COLLEGE OF ENGINEERING,  
Vijayamangalam - 638 056, Tiruppur (Dt).



## **7.1 Institutional Values and Social Responsibilities**

### **7.1.2 The institution has facilities and initiatives for**

1. Alternate source of energy and energy conservation measures
2. Management of the various types of degradable and non degradable waste
3. Water conservation
4. Green Campus initiatives
5. Disabled friendly, barrier free environment.

## **GEO – TAGGED PHOTOGRAPHS / VIDEOS OF THE FACILITIES**

Criterion 7	Institutional Values and Best Practices	100
-------------	---	-----

**Key Indicator 7.1 – Institutional Values and Social Responsibilities**

**7.1.2 : The institution has facilities and initiatives for**

1. Alternate source of energy and energy conservation measures
2. Management of the various types of degradable and non degradable waste
3. Water conservation
4. Green Campus initiatives
5. Disabled friendly, barrier free environment.

Responses : Option A. 4 or All of the above

**GEO – TAGGED PHOTOGRAPHS / VIDEOS OF THE FACILITIES**

TABLE OF CONTENTS

S.NO	NAME OF THE FACILITIES	GEO-TAGGED PHOTOGRAPHS OF THE FACILITIES	PAGE NUMBER
1	ALTERNATE SOURCES OF ENERGY AND ENERGY CONSERVATION MEASURES	SOLAR PANEL – 20 KW	4
		DIESEL GENERATOR	5
		UNITERRUPTED POWER SUPPLY	6
		LED LAMPS	8
2	MANAGEMENT OF THE VARIOUS TYPES OF DEGRADABLE AND NON-DEGRADABLE WASTE	DEGRADABLE AND NON DEGRADABLE WASTE BIN	9
		CHEMICAL WASTE	11
		E WASTE	11
		SEGREGATION OF WASTE	12

3	WATER CONSERVATION	RAIN WATER HARVESTING	13
		REVERSE OSMOSIS PLANT (RO PLANT)	14
		SUMP TANK	15
		BORE WELL	16
		WATER TANK	17
		WATER DISTRIBUTION THROUGH PIPE LINE	17
		SEWAGE TREATMENT PLANT	18
4	GREEN CAMPUS INITIATIVES	WATER CONSERVATION POSTER	19
		SAY NO TO PLASTIC POSTER	19
		NO VEHICLE ENTRY POSTER	20
		GO GREEN POSTER	20
		BARRIER FREE ENVIRONMENTAL POSTER	21
		COLLEGE CAMPUS PHOTOS	22
5	DISABLED FRIENDLY, BARRIER FREE ENVIRONMENT	RAMP FACILITIES	25
		DISABLED FRIENDLY WASHROOM(Gens)	25
		DISABLED FRIENDLY WASHROOM(Ladies)	26
		WHEEL CHAIR	26
		PEDESTRIAN PATH	27
		FIRE EXTIGUISHERS AND FIRE BUCKETS	28
		AMBULANCE FACILITIES	31

## 7.1.2 THE INSTITUTION HAS FACILITIES AND INITIATIVES FOR

### 1. ALTERNATE SOURCES OF ENERGY AND ENERGY CONSERVATION MEASURES.

#### SOLAR PANEL – 20 KW

Solar panels are a renewable energy sources that have been installed on our college campus to reduce carbon footprint and save energy cost. Solar panels can also help colleges achieve their sustainability goals and demonstrate their commitment to environmental stewardship.



*me*

**Dr.M.VIJAYAKUMAR** ME., Ph.D.,  
PRINCIPAL  
SASURIE COLLEGE OF ENGINEERING,  
Vijayamangalam - 638 056, Tiruppur (Dt).

## DIESEL GENERATOR – 1 (250 KVA)

Diesel generators are used in our college campus to provide the continuity of operation during the power outages and emergency lighting in case of emergencies.



## DIESEL GENERATOR -2 (180 KVA)



*Me*  
**Dr.M.VIJAYAKUMAR** ME., Ph.D.,  
PRINCIPAL  
SASURIE COLLEGE OF ENGINEERING,  
Vijayamangalam - 638 056, Tirupur (Dt).

## UNINTERRUPTED POWER SUPPLY – 40 KVA

### (MAIN BUILDING – COMPUTER LAB – I)

UPS systems provide continuous power backup during outages, ensuring critical operations like classroom technology, research equipment, and system remain uninterrupted.



## UNINTERRUPTED POWER SUPPLY – 20 KVA

### (MAIN BUILDING – COMPUTER LAB – II & LANGUAGE LAB)



  
**Dr. M. VIJAYAKUMAR** ME., Ph.D.,  
PRINCIPAL  
 **SASURIE COLLEGE OF ENGINEERING,**  
Vijayamangalam - 638 056, Tirupur (Dt).



**UNITTERPTED POWER SUPPLY – 20 KVA**

**(MAIN BUILDING – EMBEDDED LAB)**



**UNITTERPTED POWER SUPPLY – 5 KVA**

**(MAIN BUILDING – OFFICE)**



*Mb*  
**Dr.M.VIJAYAKUMAR** ME., Ph.D.,  
PRINCIPAL  
SASURIE COLLEGE OF ENGINEERING,  
Vijayamangalam - 638 056, Tirupur (Dt).

## ENERGY CONSERVATION – LED LAMPS

In our college main building LED lamps are used and some of the images are shown below.



*M*  
**Dr.M.VIJAYAKUMAR** ME., Ph.D.,  
PRINCIPAL

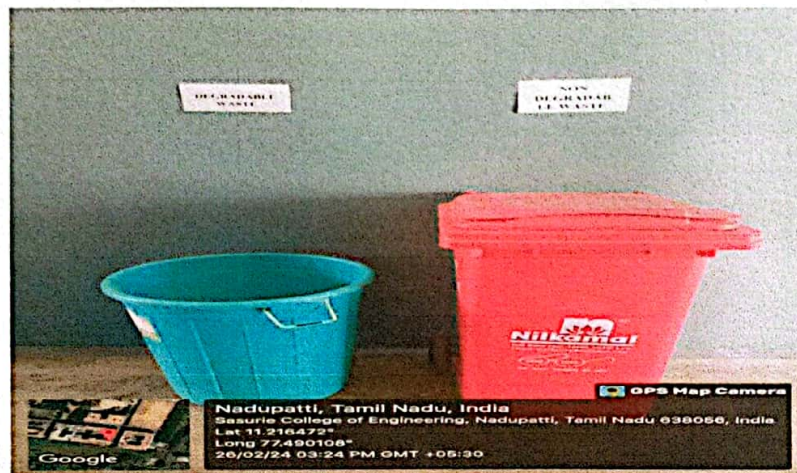


**SASURIE COLLEGE OF ENGINEERING,**  
Vijayamangalam - 638 056, Tirupur (Dt).

## 7.1.2 THE INSTITUTION HAS FACILITIES AND INITIATIVES FOR

### 2. MANAGEMENT OF THE VARIOUS TYPES OF DEGRADABLE AND NONDEGRADABLE WASTE

#### DEGRADABLE AND NON DEGRADABLE WASTE BIN (MAIN BUILDING - GROUND FLOOR)



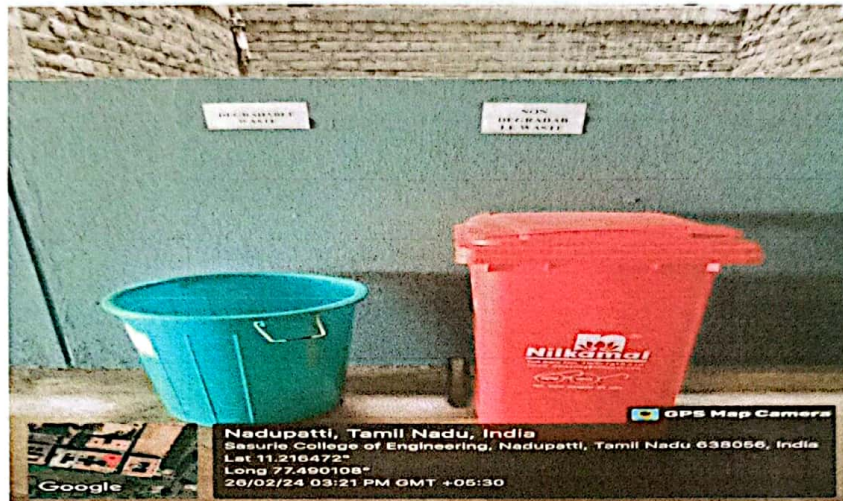
#### DEGRADABLE AND NON DEGRADABLE WASTE BIN (MAIN BUILDING – FIRST FLOOR)



  
**Dr.M.VIJAYAKUMAR** ME., Ph.D.,  
PRINCIPAL  
SASURIE COLLEGE OF ENGINEERING,  
Vijayamangalam - 638 056, Tirupur (Dt).

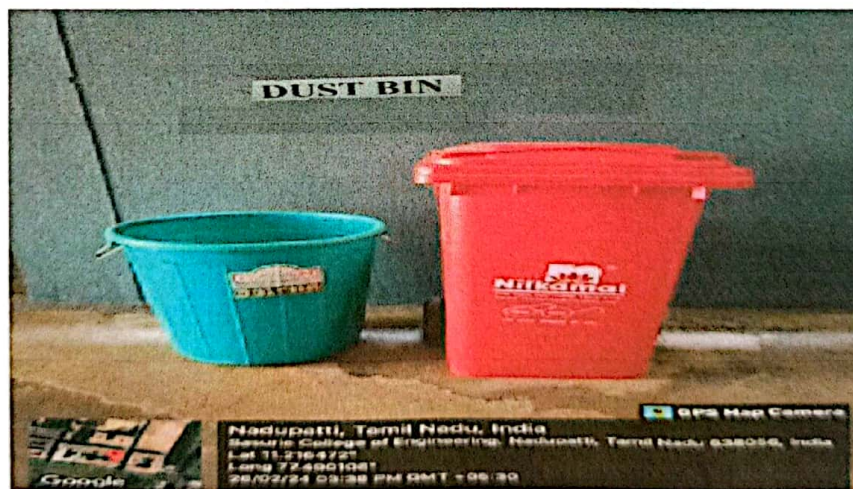
**DEGRADABLE AND NON DEGRADABLE WASTE BIN**

**(MAIN BUILDING – SECOND FLOOR)**



**DEGRADABLE AND NON DEGRADABLE WASTE BIN**

**(MAIN BUILDING – THIRD FLOOR)**



  
**Dr.M.VIJAYAKUMAR** ME., Ph.D.,  
PRINCIPAL  
SASURIE COLLEGE OF ENGINEERING,  
Vijayamangalam - 638 056, Tirupur (Dt).

## CHEMICAL WASTE



## E WASTE



  
**Dr. M. V. JAYAKUMAR ME., Ph.D.,**  
PRINCIPAL  
 **SASURIE COLLEGE OF ENGINEERING,**  
Vijayamangalam - 638 056, Tirupur (Dt).

## SEGREGATION OF WASTE



*Dr. M. Vijayakumar*  
**Dr.M.VIJAYAKUMAR** ME., Ph.D.,  
PRINCIPAL



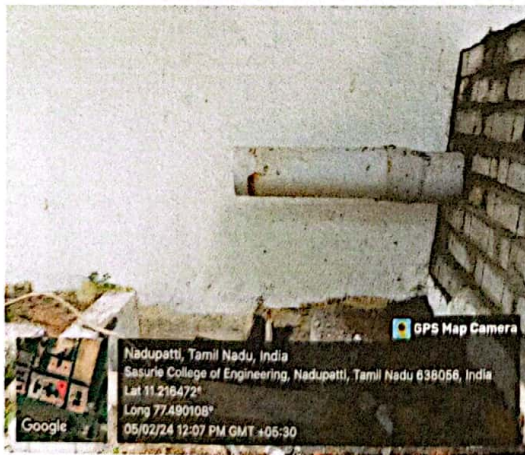
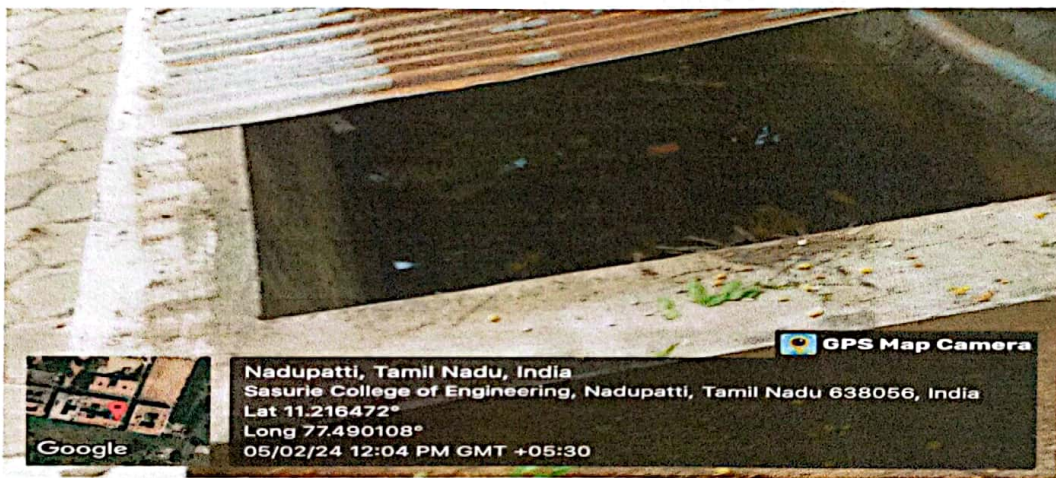
**SASURIE COLLEGE OF ENGINEERING,**  
Vijayamangalam - 638 056, Tirupur (Dt).

## 7.1.2 THE INSTITUTION HAS FACILITIES AND INITIATIVES FOR

### 3.WATER CONSERVATION.

#### RAIN WATER HARVESTING

Rainwater harvesting pits are an essential component of RWH systems minimize storm water runoff, and contribute to environmental sustainability. In college campus rain water harvesting pit are provided around the building.

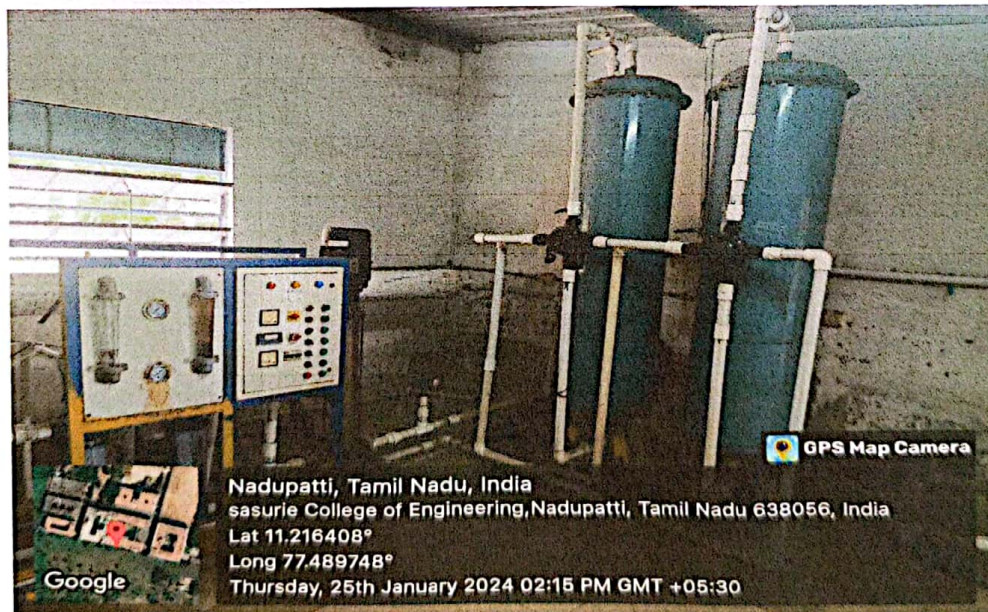


*M*  
**Dr.M.VIJAYAKUMAR ME., Ph.D.,**  
PRINCIPAL



**SASURIE COLLEGE OF ENGINEERING,**  
Vijayamangalam - 638 056, Tirupur (Dt).

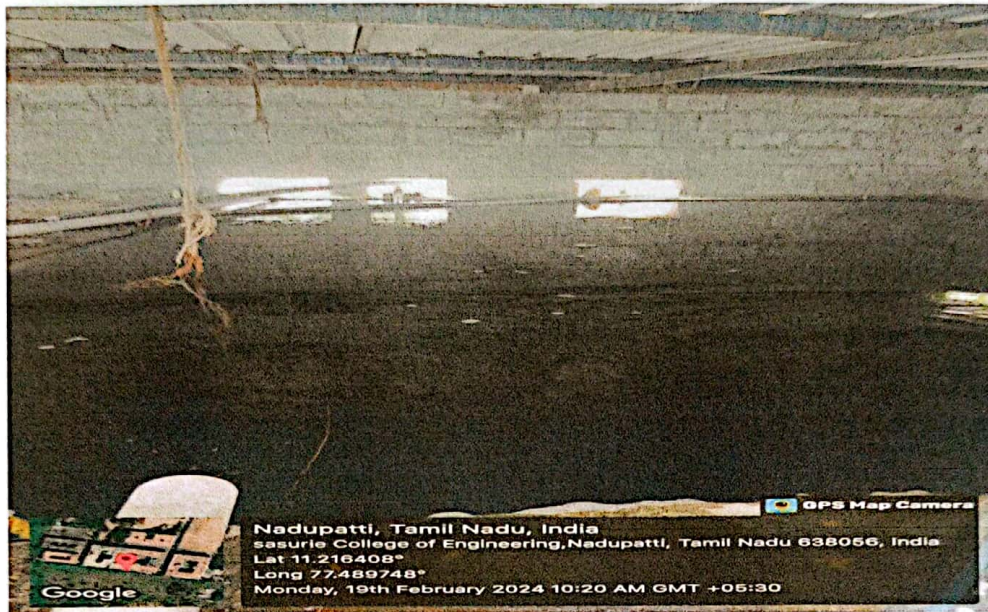
## REVERSE OSMOSIS PLANT (RO PLANT)



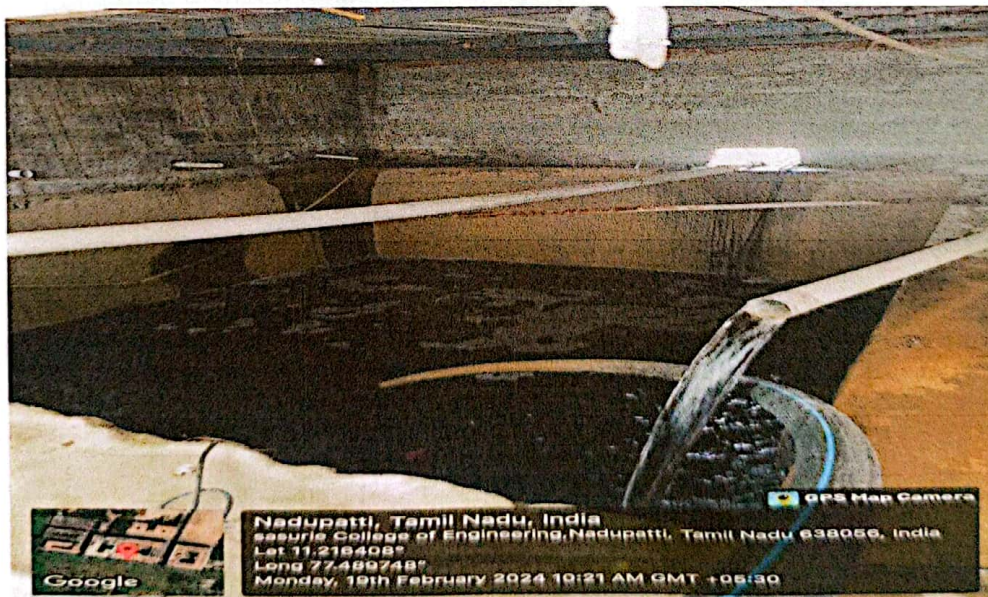
  
**Dr.M.VIJAYAKUMAR** ME., Ph.D.,  
PRINCIPAL  
SASURIE COLLEGE OF ENGINEERING,  
Vijayamangalam - 638 056, Tirupur (Dt).



**SUMP TANK – I (CAPACITY 40,000 Liter)**



**SUMP TANK – II (CAPACITY 30,000 Liter)**



  
**Dr. M. VIJAYAKUMAR** ME., Ph.D.,  
PRINCIPAL  
SASURIE COLLEGE OF ENGINEERING  
Vijayamangalam

**BORE WELL - I**



**BORE WELL - II**



  
**Dr. M. VIJAYAKUMAR** ME., Ph.D.,  
PRINCIPAL  
 **SASURIE COLLEGE OF ENGINEERING,**  
Vijayamangalam - 638 056, Tirupur (Dt).

## WATER TANK – (MAIN BUILDING)

The water tank has been located in the top of the building and providing a steady supply of water for various routine purpose.



## WATER DISTRIBUTION THROUGH PIPE LINES



**Dr.M.VIJAYAKUMAR** ME., Ph.D.,  
PRINCIPAL  
SASURIE COLLEGE OF ENGINEERING,  
Vijayamangalam - 638 056, Tirupur (Dt).

**SEWAGE TREATMENT PLANT (STP)**



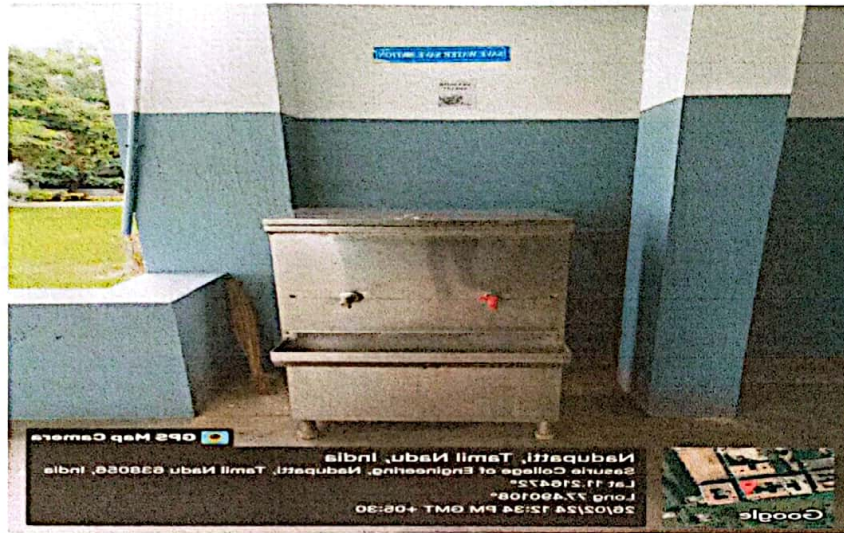
*hna*

**Dr.M.VIJAYAKUMAR M.E., Ph.D.,**  
PRINCIPAL  
**SASURIE COLLEGE OF ENGINEERING,**  
Vijayanangalam - 638 056, Tirupur (Dt).

## 7.1.2 THE INSTITUTION HAS FACILITIES AND INITIATIVES FOR

### 4.GREEN CAMPUS INITIATIVES

#### WATER CONSERVATION POSTER



#### SAY NO TO PLASTIC POSTER ON NOTICE BOARD

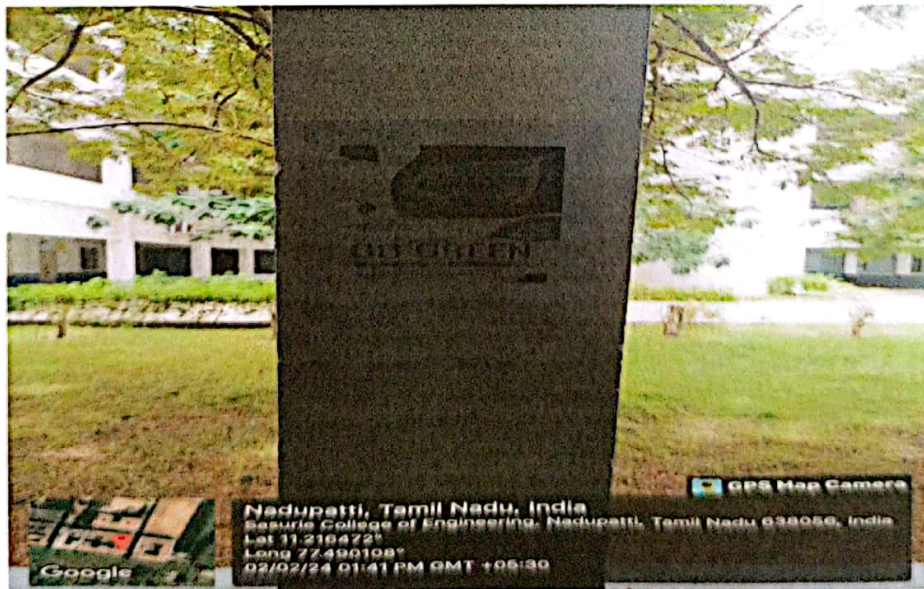


  
**Dr.M.VIJAYAKUMAR** ME., Ph.D.,  
PRINCIPAL  
 **SASURIE COLLEGE OF ENGINEERING,**  
Vijayamangalam - 638 056, Tirupur (Dt).

**NO VEHICLE ENTRY POSTER**



**GO GREEN POSTER**



*Me*

**Dr.M.VIJAYAKUMAR ME., Ph.D.,**  
PRINCIPAL



**SASURIE COLLEGE OF ENGINEERING,**  
Vijayamangalam - 638 056, Tirupur (Dt).

## BARRIER FREE ENVIRONMENT POSTER



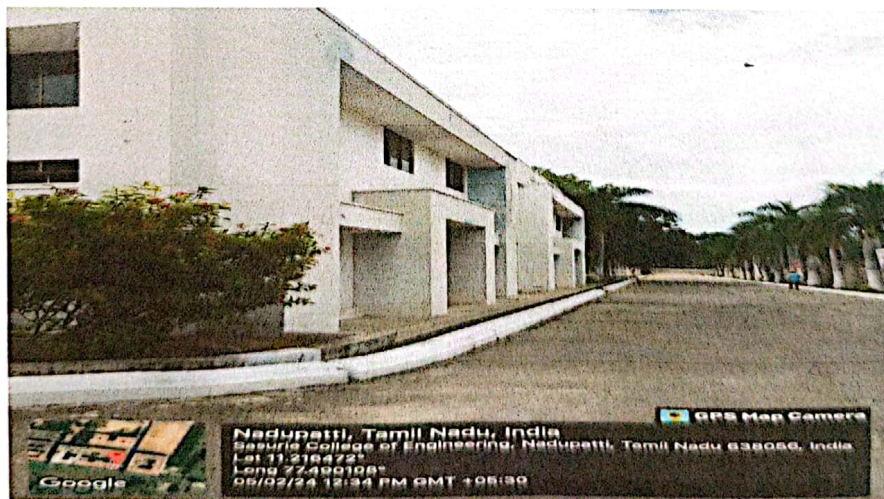
  
**Dr.M.VIJAYAKUMAR** ME., Ph.D.,  
PRINCIPAL  
 **SASURIE COLLEGE OF ENGINEERING,**  
Vijayamangalam - 638 056, Tirupur (Dt).

## COLLEGE CAMOUS PHOTOS

### MAIN BUILDING



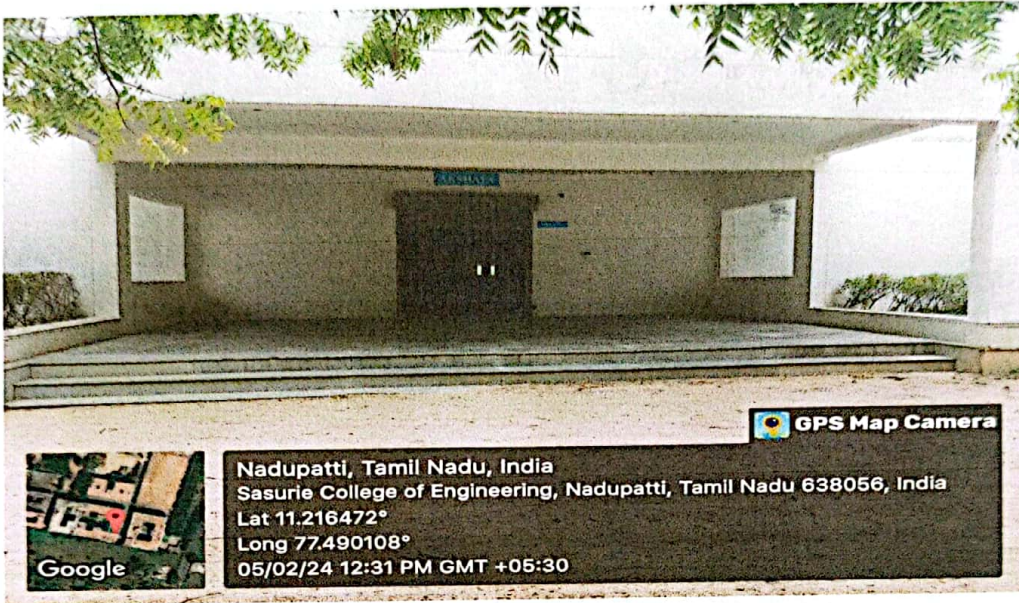
### CIVIL LABORATORY



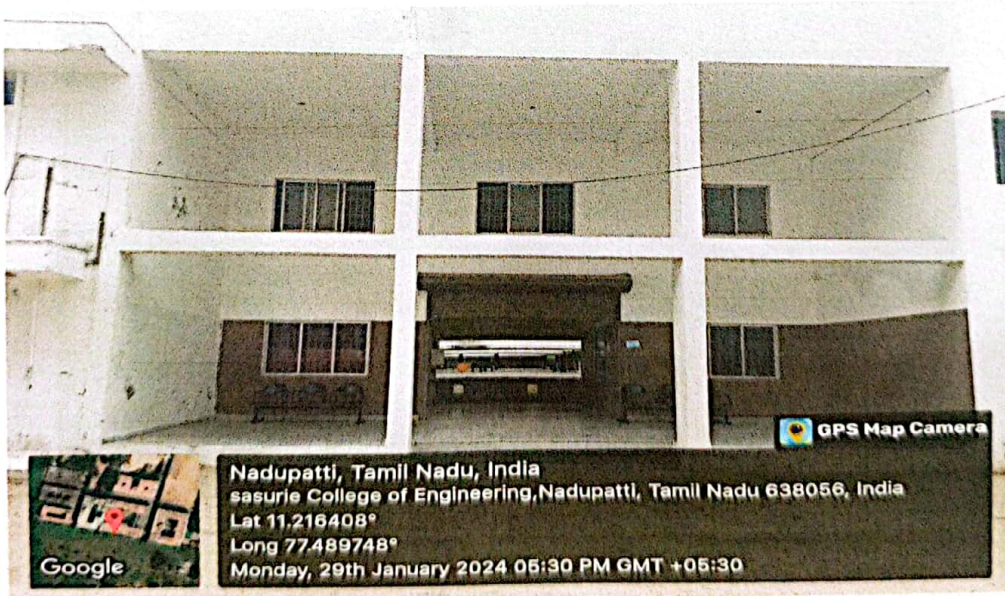
  
**Dr. M. VIJAYAKUMAR** ME., Ph.D.,  
PRINCIPAL  
 **SASURIE COLLEGE OF ENGINEERING,**  
Vijayamangalam - 638 056, Tirupur (Dt).



**MESS**



**HOSTEL BUILDING**



*Me*

**Dr.M.VIJAYAKUMAR** ME., Ph.D.,  
PRINCIPAL  
**SASURIE COLLEGE OF ENGINEERING,**  
Vijayamangalam - 638 056, Tirupur (Dt).

COLLEGE GARDEN



*Me*



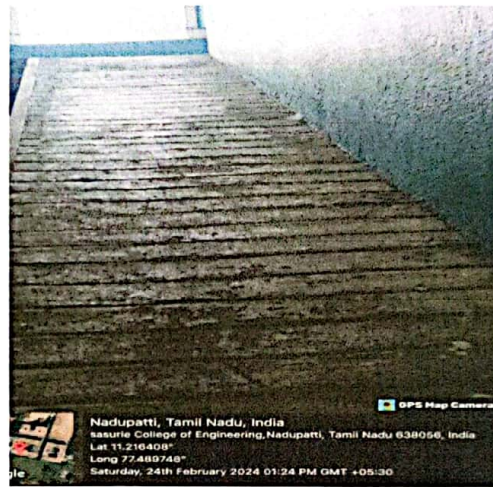
**Dr.M.VIJAYAKUMAR ME., Ph.D.,**  
PRINCIPAL  
**SASURIE COLLEGE OF ENGINEERING,**  
Vijayamangalam - 638 056, Tirupur (Dt).

## 7.1.2 THE INSTITUTION HAS FACILITIES AND INITIATIVES FOR

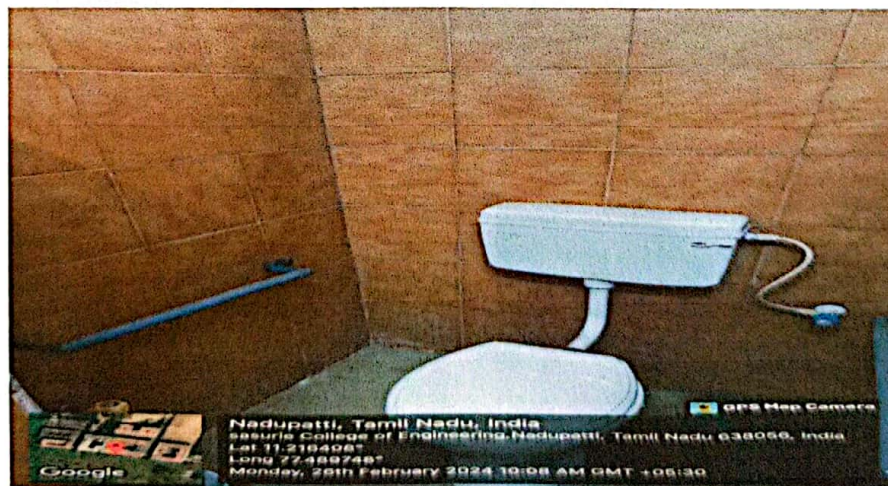
### 5.DISABLED FRIENDLY,BARRIER FREE ENVIRONMENT

#### RAMP FACILITIES

Main building has a ramp designed for individuals with disabilities, particularly those with mobility impairments.



#### DISABLED FRIENDLY WASHROOM (Gens)



  
**Dr.M.VIJAYAKUMAR** ME., Ph.D.,  
PRINCIPAL  
 **SASURIE COLLEGE OF ENGINEERING,**  
Vijayamangalam - 638 056, Tirupur (Dt).

### DISABLED FRIENDLY WASHROOM (Ladies)



### WHEEL CHAIR



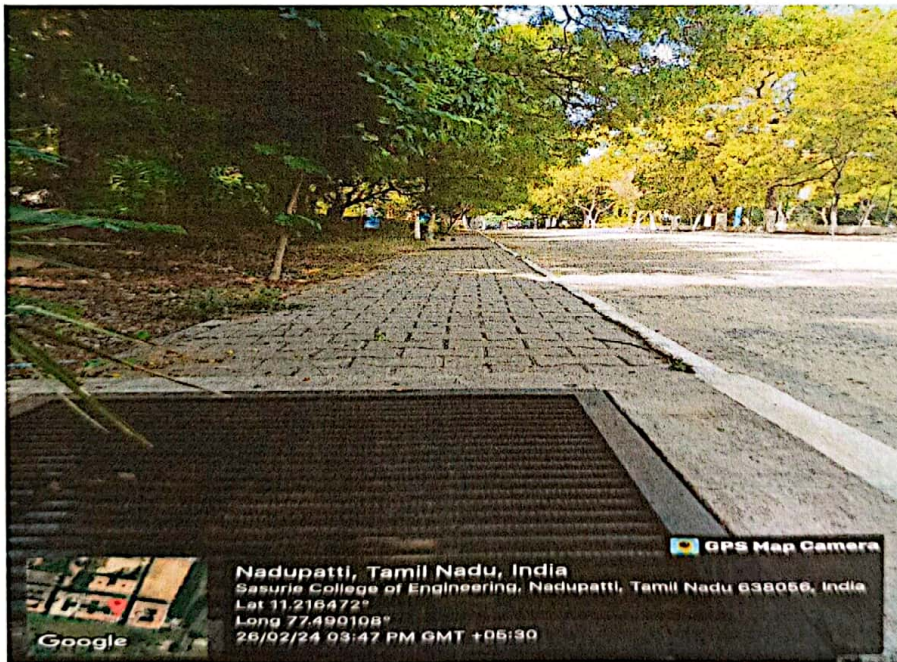
*M*

**Dr.M.VIJAYAKUMAR ME., Ph.D.,**  
PRINCIPAL



**SASURIE COLLEGE OF ENGINEERING,**  
Vijayamangalam - 633 056, Tirupur (Dt).

## PEDESTRIAN PATH



*Me*



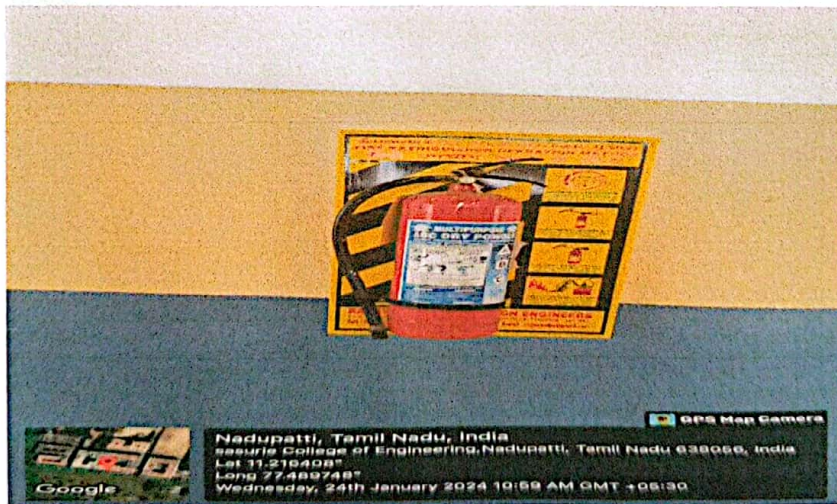
**Dr.M.VIJAYAKUMAR** ME., Ph.D.,  
PRINCIPAL  
**SASURIE COLLEGE OF ENGINEERING,**  
Vijayamangalam - 633 056, Tirupur (Dt).

## FIRE EXTIGUISHERS AND FIRE BUCKETS

### FIRE EXTIGUISHER (Main Building – Ground Floor)



### FIRE EXTIGUISHER (Main Building – First Floor)

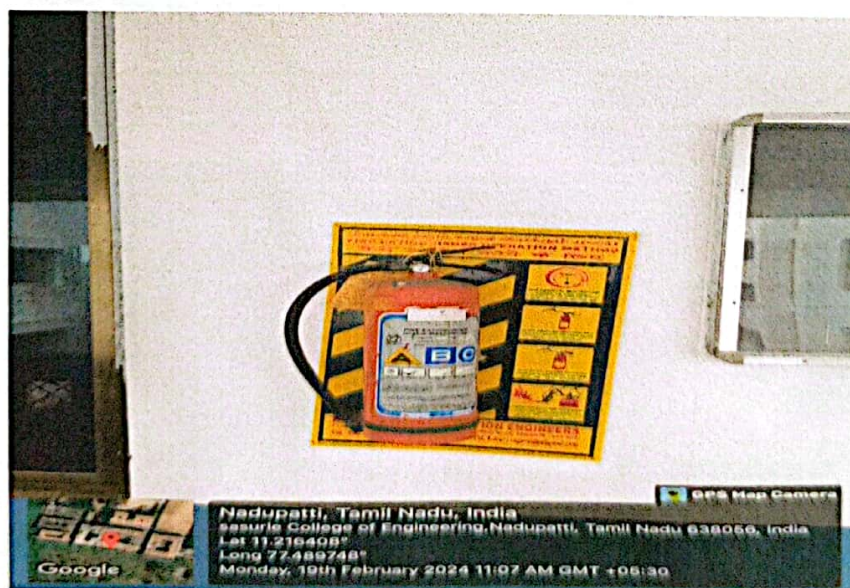


  
**Dr.M.VIJAYAKUMAR** ME., Ph.D.,  
PRINCIPAL  
**SASURIE COLLEGE OF ENGINEERING,**  
Vijayamangalam - 638 056, Tirupur (Dt).

**FIRE EXTIGUISHER (Main Building – Second Floor)**



**FIRE EXTIGUISHER (Main Building – Third Floor)**



*M*  
**Dr.M.VIJAYAKUMAR** ME., Ph.D.,  
PRINCIPAL  
SASURIE COLLEGE OF ENGINEERING,  
Vijayamangalam - 638 056, Tirupur (Dt).

**FIRE BUCKETS 1 (MAIN BUILDING)**



**FIRE BUCKETS 2 (MAIN BUILDING)**



*M*

**Dr.M.VIJAYAKUMAR ME., Ph.D.,**  
PRINCIPAL



**SASURIE COLLEGE OF ENGINEERING,**  
Vijayamangalam - 638 056, Tirupur (Dt).



## AMBULANCE FACILITIES



*M*

**Dr.M.VIJAYAKUMAR** ME., Ph.D.,  
PRINCIPAL  
**SASURIE COLLEGE OF ENGINEERING,**  
Vijayamangalam - 633 056, Tirupur (Dt).