



SASURIE COLLEGE OF ENGINEERING

Approved by AICTE, New Delhi. Affiliated to Anna University, Chennai

Near NH544, Coimbatore Bypass, Near Vijayamangalam Tollgate, Tirupur 638056

NAAC DOCUMENTS

QUALITY INDICATOR FRAME WORK

CRITERION - 6

GOVERNANCE, LEADERSHIP & MANAGEMENT

SUBMITTED BY

IQAC

INTERNAL QUALITY ASSURANCE CELL

SASURIE COLLEGE OF ENGINEERING

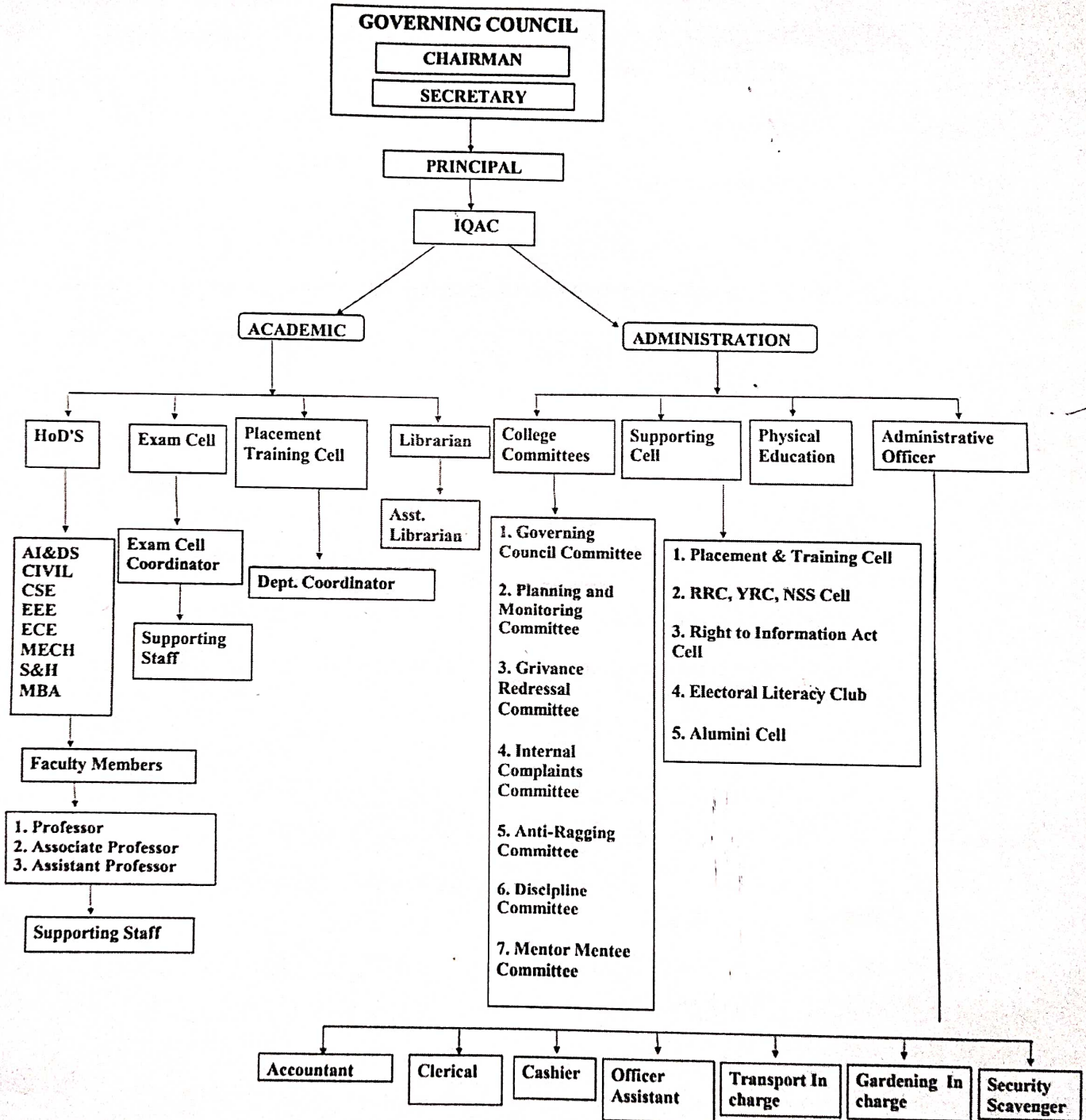


Decentralization and Participative Management

Table of Contents

S.No	Description	Page No
1.	Organizational Chart	3-4

ORGANIZATIONAL CHART




Dr.M.VIJAYAKUMAR ME., Ph.D.,
 PRINCIPAL



SASURIE COLLEGE OF ENGINEERING,
 Vijayamangalam - 638 056, Tirupur (Dt).



ॐ
SASURIE
COLLEGE OF ENGINEERING
Approved by AICTE, New Delhi
Affiliated to Anna University, Chennai

Vision:

Our ambition is to develop a centre for imparting technical education with creativity and perform research with practical values to meet challenges of engineering environment and to achieve rural empowerment.

Mission:

The institute aims to produce innovative professionals with sound subject knowledge, research experience and social character for a sustainable growth of the nation by providing adequate training to develop education with leadership qualities.


Dr.M.VIJAYAKUMAR ME., Ph.D.,
PRINCIPAL



SASURIE COLLEGE OF ENGINEERING,
Vijayamangalam - 638 056, Tirupur (Dt).